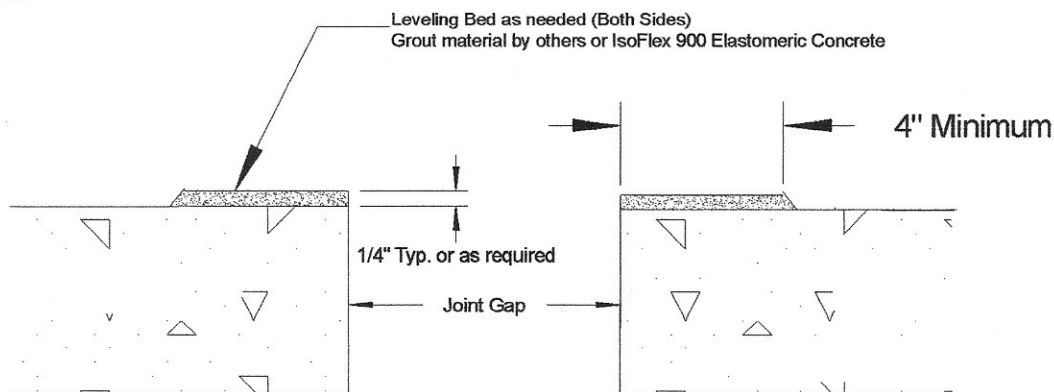


# Decklock Installation Procedure

## Step 1

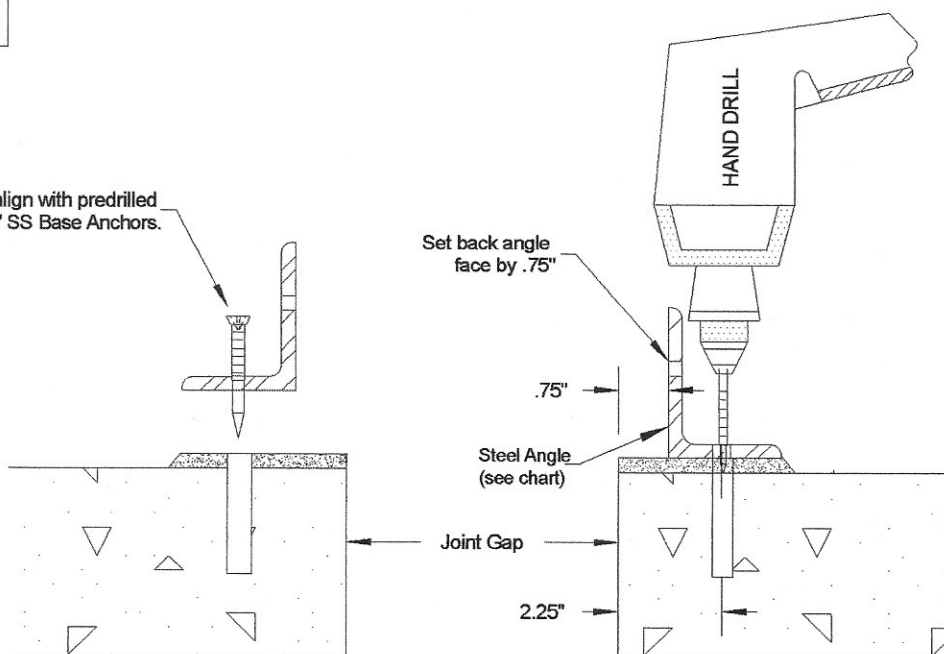


The concrete interfaces must be repaired to eliminate any spalling or damaged areas prior to expansion joint installation.

For purposes of leveling and setting final elevation, place a leveling bed at each side of the joint gap opening. The leveling bed should be a minimum of 4" wide.

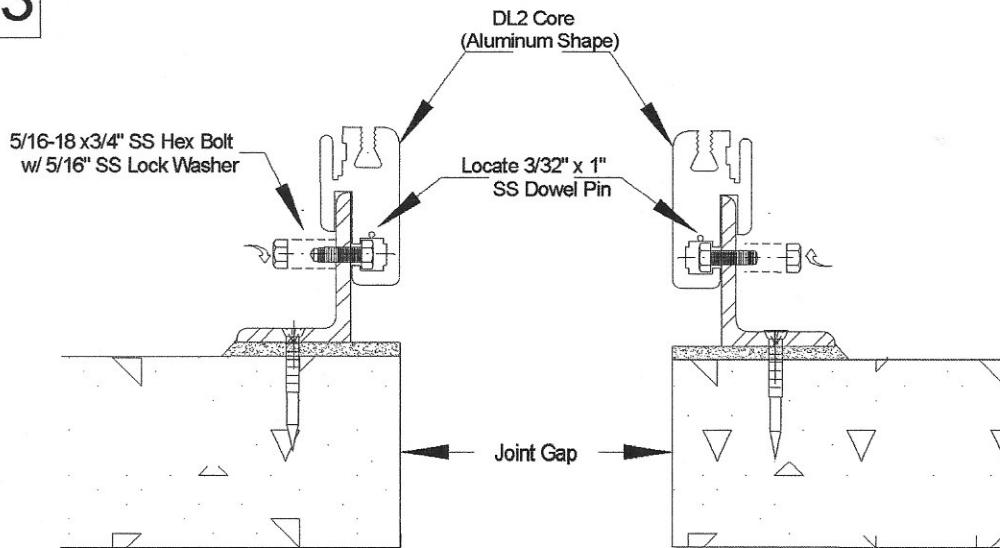
## Step 2

Locate base angle to align with predrilled holes and insert 3/8 x 4" SS Base Anchors.



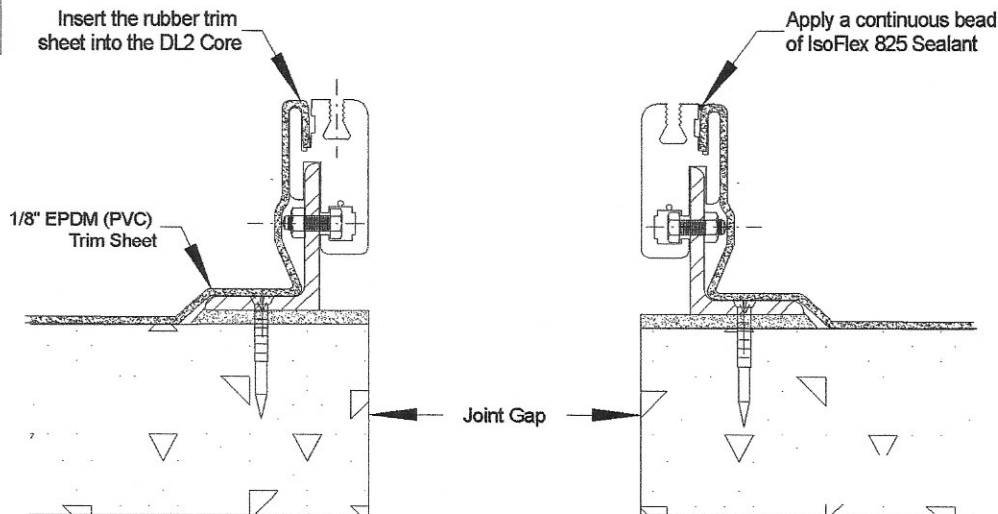
SYSTEM DEPTH "D"	Steel Angle		
	Vert. Leg	Horiz. Leg	Thickness
3.500	2.000	3.000	0.25
4.500	3.000	3.000	0.25
5.500	4.000	3.000	0.25
6.500	5.000	3.000	0.25
7.500	6.000	3.000	0.25
8.500	7.000	3.000	0.25
9.500	8.000	3.000	0.25
10.500	9.000	3.000	0.25
11.500	10.000	3.000	0.25
12.500	11.000	3.000	0.25
13.500	12.000	3.000	0.25
14.500	13.000	3.000	0.25
15.500	14.000	3.000	0.25
16.500	15.000	3.000	0.25
17.500	16.000	3.000	0.25
18.500	17.000	3.000	0.25
19.500	18.000	3.000	0.25
20.500	19.000	3.000	0.25
21.500	20.000	3.000	0.25
22.500	21.000	3.000	0.25
23.500	22.000	3.000	0.25
24.500	23.000	3.000	0.25
25.500	24.000	3.000	0.25
26.500	25.000	3.000	0.25
27.500	26.000	3.000	0.25
28.500	27.000	3.000	0.25
29.500	28.000	3.000	0.25
30.500	29.000	3.000	0.25
31.500	30.000	3.000	0.25
32.500	31.000	3.000	0.25
33.500	32.000	3.000	0.25
34.500	33.000	3.000	0.25
35.500	34.000	3.000	0.25
36.500	35.000	3.000	0.25
37.500	36.000	3.000	0.25
38.500	37.000	3.000	0.25
39.500	38.000	3.000	0.25
40.500	39.000	3.000	0.25
41.500	40.000	3.000	0.25
42.500	41.000	3.000	0.25
43.500	42.000	3.000	0.25
44.500	43.000	3.000	0.25
45.500	44.000	3.000	0.25
46.500	45.000	3.000	0.25
47.500	46.000	3.000	0.25
48.500	47.000	3.000	0.25
49.500	48.000	3.000	0.25
50.500	49.000	3.000	0.25
51.500	50.000	3.000	0.25
52.500	51.000	3.000	0.25
53.500	52.000	3.000	0.25
54.500	53.000	3.000	0.25
55.500	54.000	3.000	0.25
56.500	55.000	3.000	0.25
57.500	56.000	3.000	0.25
58.500	57.000	3.000	0.25
59.500	58.000	3.000	0.25
60.500	59.000	3.000	0.25
61.500	60.000	3.000	0.25
62.500	61.000	3.000	0.25
63.500	62.000	3.000	0.25
64.500	63.000	3.000	0.25
65.500	64.000	3.000	0.25
66.500	65.000	3.000	0.25
67.500	66.000	3.000	0.25
68.500	67.000	3.000	0.25
69.500	68.000	3.000	0.25
70.500	69.000	3.000	0.25
71.500	70.000	3.000	0.25
72.500	71.000	3.000	0.25
73.500	72.000	3.000	0.25
74.500	73.000	3.000	0.25
75.500	74.000	3.000	0.25
76.500	75.000	3.000	0.25
77.500	76.000	3.000	0.25
78.500	77.000	3.000	0.25
79.500	78.000	3.000	0.25
80.500	79.000	3.000	0.25
81.500	80.000	3.000	0.25
82.500	81.000	3.000	0.25
83.500	82.000	3.000	0.25
84.500	83.000	3.000	0.25
85.500	84.000	3.000	0.25
86.500	85.000	3.000	0.25
87.500	86.000	3.000	0.25
88.500	87.000	3.000	0.25
89.500	88.000	3.000	0.25
90.500	89.000	3.000	0.25
91.500	90.000	3.000	0.25
92.500	91.000	3.000	0.25
93.500	92.000	3.000	0.25
94.500	93.000	3.000	0.25
95.500	94.000	3.000	0.25
96.500	95.000	3.000	0.25
97.500	96.000	3.000	0.25
98.500	97.000	3.000	0.25
99.500	98.000	3.000	0.25
100.500	99.000	3.000	0.25
101.500	100.000	3.000	0.25
102.500	101.000	3.000	0.25
103.500	102.000	3.000	0.25
104.500	103.000	3.000	0.25
105.500	104.000	3.000	0.25
106.500	105.000	3.000	0.25
107.500	106.000	3.000	0.25
108.500	107.000	3.000	0.25
109.500	108.000	3.000	0.25
110.500	109.000	3.000	0.25
111.500	110.000	3.000	0.25
112.500	111.000	3.000	0.25
113.500	112.000	3.000	0.25
114.500	113.000	3.000	0.25
115.500	114.000	3.000	0.25
116.500	115.000	3.000	0.25
117.500	116.000	3.000	0.25
118.500	117.000	3.000	0.25
119.500	118.000	3.000	0.25
120.500	119.000	3.000	0.25
121.500	120.000	3.000	0.25
122.500	121.000	3.000	0.25
123.500	122.000	3.000	0.25
124.500	123.000	3.000	0.25
125.500	124.000	3.000	0.25
126.500	125.000	3.000	0.25
127.500	126.000	3.000	0.25
128.500	127.000	3.000	0.25
129.500	128.000	3.000	0.25
130.500	129.000	3.000	0.25
131.500	130.000	3.000	0.25
132.500	131.000	3.000	0.25
133.500	132.000	3.000	0.25
134.500	133.000	3.000	0.25
135.500	134.000	3.000	0.25
136.500	135.000	3.000	0.25
137.500	136.000	3.000	0.25
138.500	137.000	3.000	0.25
139.500	138.000	3.000	0.25
140.500	139.000	3.000	0.25
141.500	140.000	3.000	0.25
142.500	141.000	3.000	0.25
143.500	142.000	3.000	0.25
144.500	143.000	3.000	0.25
145.500	144.000	3.000	0.25
146.500	145.000	3.000	0.25
147.500	146.000	3.000	0.25
148.500	147.000	3.000	0.25
149.500	148.000	3.000	0.25
150.500	149.000	3.000	0.25
151.500	150.000	3.000	0.25
152.500	151.000	3.000	0.25
153.500	152.000	3.000	0.25
154.500	153.000	3.000	0.25
155.500	154.000	3.000	0.25
156.500	155.000	3.000	0.25
157.500	156.000	3.000	0.25
158.500	157.000	3.000	0.25
159.500	158.000	3.000	0.25
160.500	159.000	3.000	0.25
161.500	160.000	3.000	0.25
162.500	161.000	3.000	0.25
163.500	162.000	3.000	0.25
164.500	163.000	3.000	0.25
165.500	164.000	3.000	0.25
166.500	165.000	3.000	0.25
167.500	166.000	3.000	0.25
168.500	167.000	3.000	0.25
169.500	168.000	3.000	0.25
170.500	169.000	3.000	0.25
171.500	170.000	3.000	0.25
172.500	171.000	3.000	0.25
173.500	172.000	3.000	0.25
174.500	173.000	3.000	0.25
175.500	174.000	3.000	0.25
176.500	175.000	3.000	0.25
177.500	176.000	3.000	0.25
178.500	177.000	3.000	0.25
179.500	178.000	3.000	0.25
180.500	179.000	3.000	0.25
181.500	180.000	3.000	0.25
182.500	181.000	3.000	0.25
183.500	182.000	3.000	0.25
184.500	183.000	3.000	0.25
185.500	184.000	3.000	0.25
186.500	185.000	3.000	0.25
187.500	186.000	3.000	0.25
188.500	187.000	3.000	0.25
189.500	188.000	3.000	0.25
190.500	189.000	3.000	0.25
191.500	190.000	3.000	0.25
192.500	191.000	3.000	0.25
193.500	192.000	3.000	0.25
194.500	193.000	3.000	0.25
195.500	194.000	3.000	0.25
196.500	195.000	3.000	0.25
197.500	196.000	3.000	0.25
198.500	197.000	3.000	0.25
199.500	198.000	3.000	0.25
200.500	199.000	3.000	0.25
201.500	200.000	3.000	0.25
202.500	201.000	3.000	0.25
203.500	202.000	3.000	0.25
204.500	203.000	3.000	0.25
205.500	204.000	3.000	0.25
206.500	205.000	3.000	0.25
207.500	206.000	3.000	0.25
208.500	207.000	3.000	0.25
209.500	208.000	3.000	0.25
210.500	209.000	3.000	0.25
211.500	210.000	3.000	0.25
212.500	211.000	3.000	0.25
213.500	212.000	3.000	0.25
214.500	213.000	3.000	0.25
215.500	214.000	3.000	0.25
216.500	215.000	3.000	0.25
217.500	216.000	3.000	0.25
218.500	217.000	3.000	0.25
219.500	218.000	3.000	0.25
220.500	219.000	3.000	0.25
221.500	220.000	3.000	0.25
222.500	221.000	3.000	0.25
223.500	222.000	3.000	0.25
224.500	223.000	3.000	0.25
225.500	224.000	3.000	0.25
226.500	225.000	3.000	0.25
227.500	226.000	3.000	0.25
228.500	227.000	3.000	0.25
229.500	228.000	3.000	0.25
230.500	229.000	3.000	0.25
231.500	230.000	3.000	0.25
232.500	231.000	3.000	0.25
233.500	232.000	3.000	0.25
234.500	233.000	3.000	0.25
235.500	234.000	3.000	0.25
236.500	235.000	3.000	0.25
237.500	236.000	3.000	0.25
238.500	237.000	3.000	0.25
239.500	238.000	3.000	0.25
240.500	239.000	3.000	0.25
241.500	240.000	3.000	0.25
242.500	241.000	3.000	0.25
243.500	242.000	3.000	0.25
244.500	243.000	3.000	0.25
245.500	244.000	3.000	0.25
246.500	245.000	3.000	0.25
247.500	246.000	3.000	0.25
248.500	247.000	3.000	0.25
249.500	248.000	3.000	0.25
250.500	249.000	3.000	0.25
251.500	250.000	3.000	0.25
252.500	251.000	3.000	0.25
253.500	252.000	3.000	0.25
254.500	253.000	3.000	0.25
255.500	254.000	3.000	0.25
256.500	255.000	3.000	0.25
257.500	256.000	3.000	0.25
258.500	257.000	3.000	0.25
259.500	258.000	3.000	0.25
260.500	259.000	3.000	0.25
261.500	260.000	3.000	0.25
262.500	261.000	3.000	0.25
263.500	262.000	3.000	0.25
264.500	263.000	3.000	0.25
265.500	264.000	3.000	0.25
266.500	265.000	3.000	0.25
267.500	266.000	3.000	0.25
268.500	267.000	3.000	0.25
269.500	268.000	3.000	

## Step 3



The next step is to attach the DL2 Core aluminum shape to the steel base angle. The process involved in connecting the two parts requires that the 5/16-18 x 3/4" hex bolt be inserted into the steel angle. The steel angle is slid along the groove in the DL2 aluminum core and as you slide the two parts together, the head of the hex bolt is slid into the DL2 Core cavity. Continue to slide the two parts together as you continue to engage the hex bolts into the DL2 Core. As you progress you should thread on the 5/6" lock nuts to a slightly tightened state. This will reduce the binding of the anchors as the parts are slid together. Once the two parts are connected and in the desired alignment, tighten down the lock nuts with a socket wrench. Continue the process for the following 10 Ft sections until the joint length is fully in-place. As adjoining sections of the DL2 Core are placed, a 3/32" x 1" SS Dowel Pin should be installed to ensure alignment of the sections.

## Step 4



The next step is to install the rubber Trim Sheet. This process is completed in relationship to the waterproofing membrane manufacturer and their installation details.

The process is begun by rolling out the 50 Ft lengths of the rubber 1/8" Trim Sheet. The Trim Sheet is inserted into the receiver cavity of the DL2 Aluminum Core. Once inserted and fully set in place, a continuous bead of IsoFlex 825 sealant is applied to seal off and secure the Trim Sheet.

The Trim Sheet is then wrapped down the joint components and is sandwiched into the fluid applied membrane waterproofing being utilized on the project.

**LymTal International, Inc.**

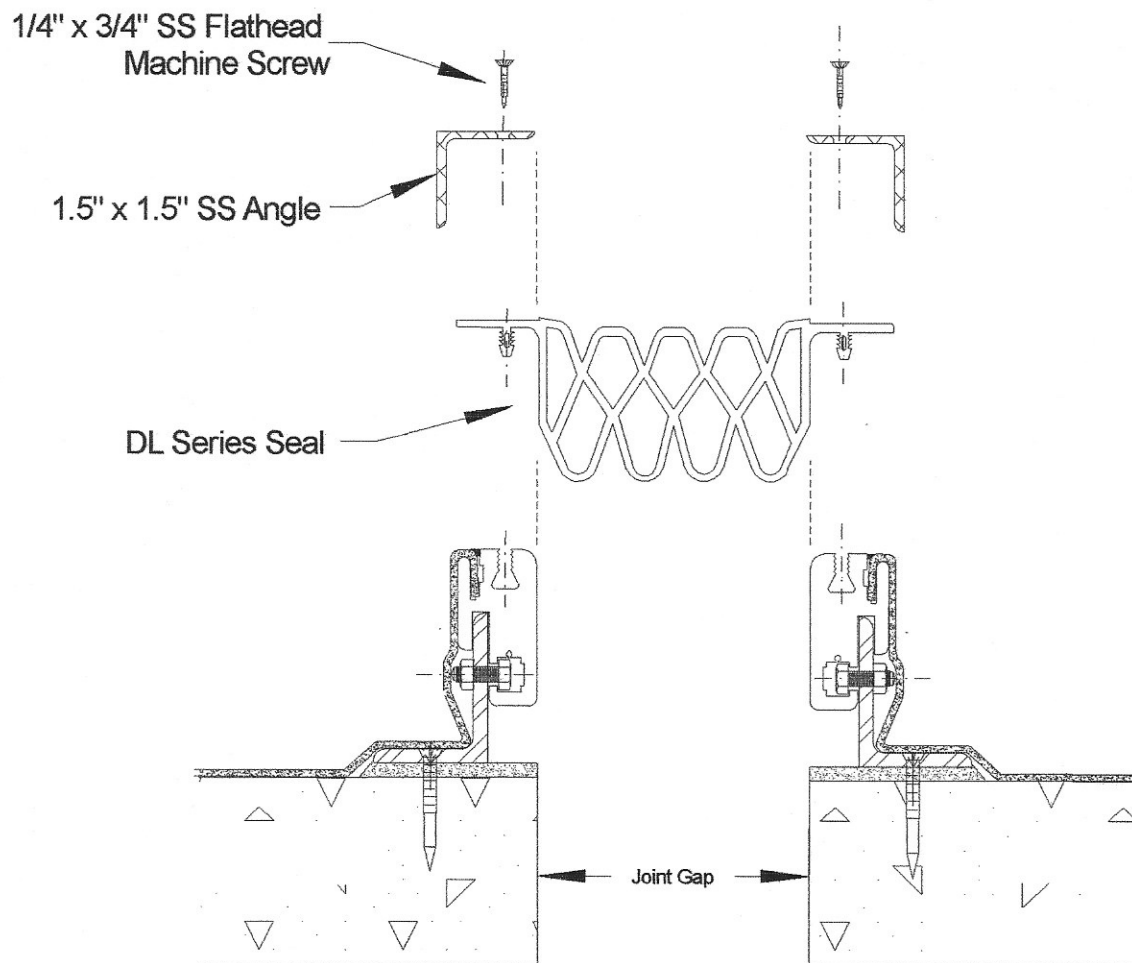
Scale: NTS Drawn By: GAB

Date: 10/18 Revised:

**Decklock Installation Page 2**

Drawing Number:

# Step 5



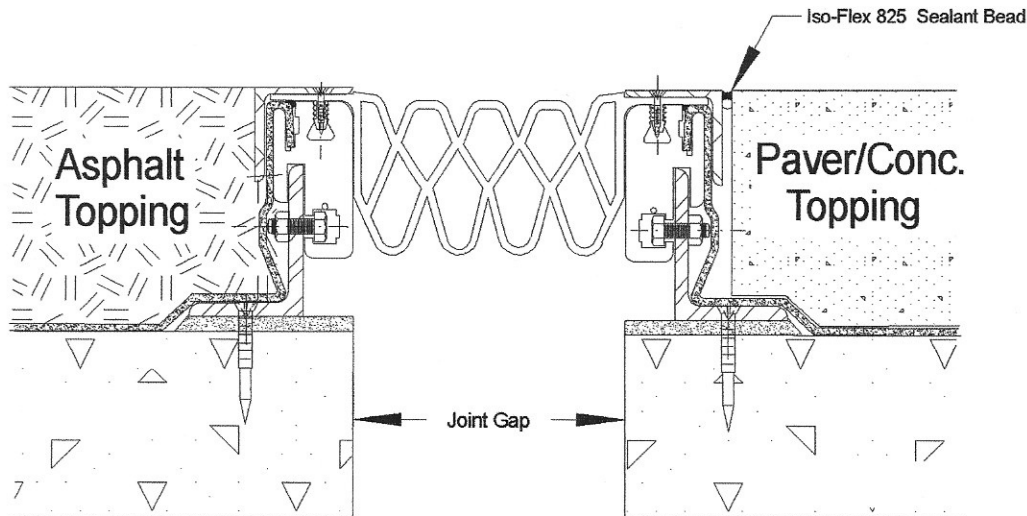
With the membrane waterproofing tie-in completed, the following step is to install the DL Series Seal and to secure it into place. Begin by uncoiling the DL Series seal and allow it to lay out and "relax" to remove any kinks from having been coiled up. Beginning at one end of the expansion joint run, begin to insert the seal body between the two DL2 Aluminum Cores. As this takes place insert the rubber tabs of the seal into the DL2 Core receivers and press the seal securely into place.

With the DL Series Seal in-place, the next step is to align and place the 1.5" x 1.5" Stainless Steel Cap Angle over the DL Seal flange. As the angle is located, be sure that the countersunk holes are on the top exposed surface. As the stainless angle is pressed down into place, begin to tighten down the 1/4" x 3/4" Stainless Steel Flathead Machine Screws into place. The screws will tap into the DL2 Core as they are tightened into place.

**LymTal International, Inc.**

Scale: NTS	Drawn By: GAB
Date: 10/18	Revised:
<b>Decklock Installation Page 3</b>	
Drawing Number:	

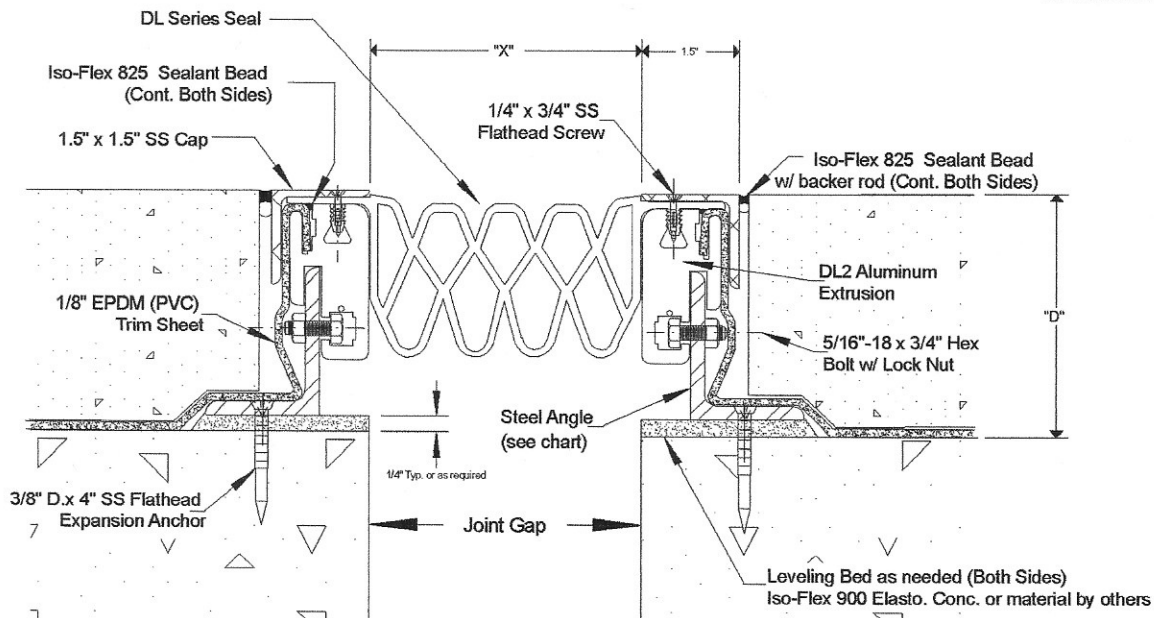
# Step 6



Once the expansion joint system is fully installed the effort can begin to install the topping construction. This may be an asphalt overlay, concrete paver or poured concrete, depending on the project requirements. If the topping is asphalt, the topping may be poured up to the expansion joint system. If it happens to be pavers or concrete, it is recommended to install a sealant bead along the interfacing edge of the expansion joint system.

# Complete

SYSTEM DEPTH "D"	Steel Angle		
	Vert. Leg	Horiz. Leg	Thickness
3.500	2.000	3.000	0.250
38.000	30.000	76.200	6.350
4.500	3.000	3.000	0.250
5.500	76.200	76.200	6.350
6.500	4.000	3.000	0.250
139.701	101.600	76.200	6.350
6.500	6.000	3.000	0.250
105.101	127.001	76.200	6.350



SEAL TYPE	TOTAL MOVEMENT	JOINT OPENING SIZE (X)			INSTALLATION WIDTH	
		Minimum	Normal	Maximum	Minimum	Maximum
DL250	2.000	1.000	2.500	3.000	1.500	2.750
	30.800	25.400	63.500	76.200	38.100	69.850
	2.500	1.500	3.500	4.000	2.000	3.750
DL350	63.500	38.100	88.900	101.600	50.800	95.250
	3.000	2.000	4.500	5.000	3.000	4.750
	76.200	50.800	114.300	127.001	76.200	120.650
DL450	3.500	3.000	5.500	6.500	4.000	5.750
	88.900	76.200	139.701	165.101	101.600	146.051

LymTal International, Inc.	
Scale: NTS	Drawn By: GAB
Date: 10/18	Revised:
Decklock Installation Page 4	
Drawing Number:	

# **Recommended Tools and Equipment**

## **Hand Tools & Materials**

1. Tape Measure
2. Chalk Line & Chalk
3. Combination Square
4. 4 Foot Level
5. Razor Knives
6. Pry Bars
7. Margin Trowels
8. Rubber Mallet
9. Shop Vac
10. Clean Rags
11. Open End Wrenches
12. Hex Socket Ratchet Set
13. Screw Drivers

## **Electric Tools**

1. Extension Cords
2. Power Drills
3. Drill Bits
4. Power Miter Saw
5. Sawz-All Reciprocating Saw
6. Soldering Iron with flared tip
7. Hand Grinders

# **Decklock Component List**

## **Components**

1. A36 Steel Base Angles (Various Sizes)
2. DL2 Core Aluminum Extrusion
3. DL Series Thermoplastic Rubber Seal (Various Sizes)
4. Type 304 Stainless Steel 1.5" x 1.5" Angles
5. 1/8" x 12" Rubber Trim Strip in EPDM or PVC
6. IsoFlex 825 Sealant

## **Hardware**

1. 1/4" x 3/4" Stainless Steel Flathead Machine Screw
2. 5/16" x 3/4" Stainless Steel Hex Bolt
3. 5/16" Stainless Steel Hex Lock Nut w/ Nylon
4. 3/8" x 4" Stainless Steel Expansion Anchor
5. 3/32" x 1" Stainless Steel Dowel Pin

***LymTal International, Inc.***

Scale: NTS	Drawn By: GAB
Date: 10/18	Revised:
Decklock Installation Page 5	
Drawing Number:	