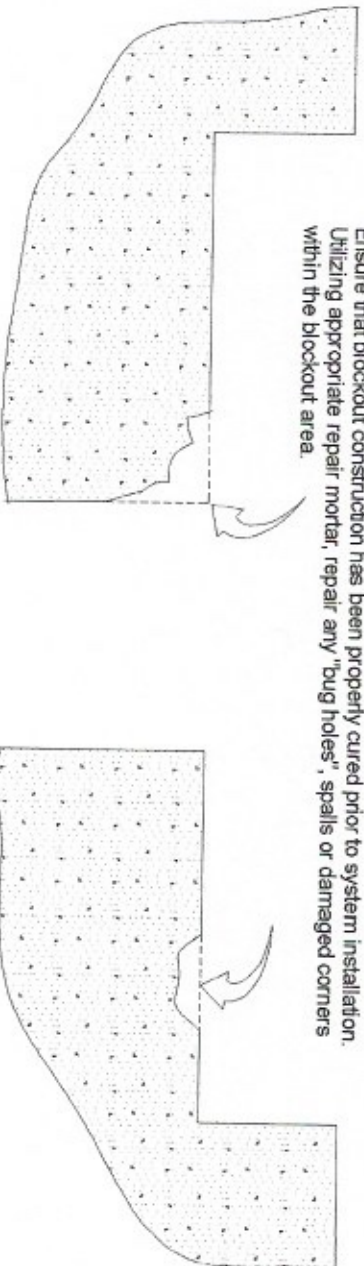


Step # 1

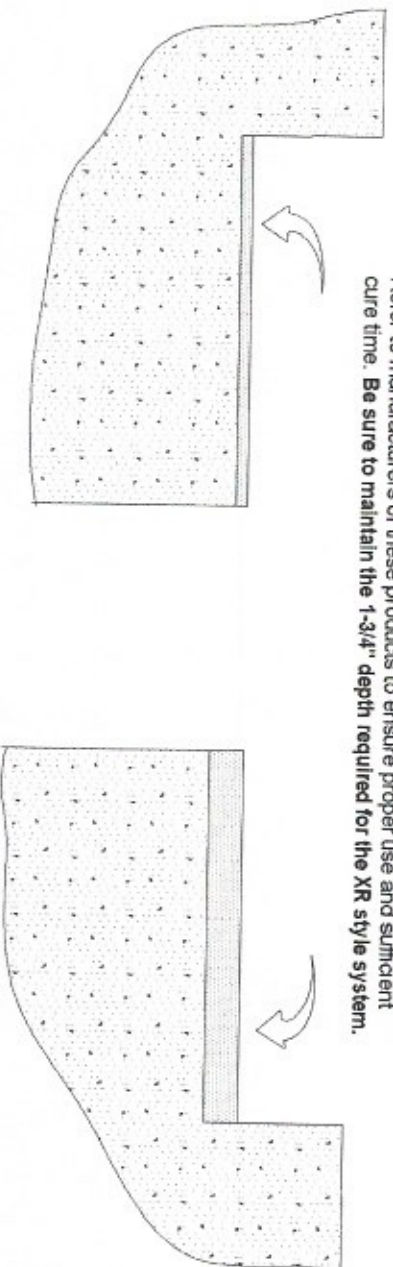
Iso-Flex Xtreme Joint System Installation Procedures

Ensure that blockout construction has been properly cured prior to system installation. Utilizing appropriate repair mortar, repair any "bug holes", spalls or damaged corners within the blockout area.



Step # 2

The base of blockout on each side of the joint gap must be on the same plane. For this reason it may be required that a leveling mortar (by others) be utilized. Refer to manufacturers of these products to ensure proper use and sufficient cure time. **Be sure to maintain the 1-3/4" depth required for the XR style system.**



LymTal International, Inc.

Scale: NTS

Drawn By: LAG

Date: 9/1/17

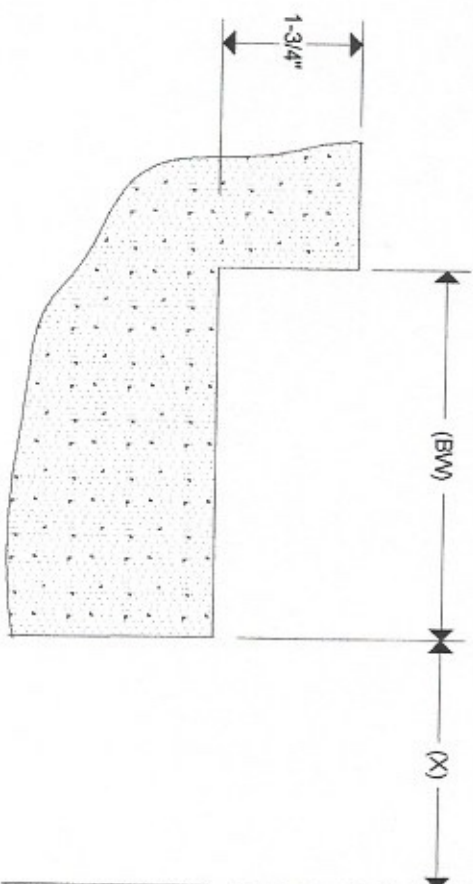
Revised:

Iso-Flex Xtreme Joint Installation

Polywing Design

XR Polywing Installation Sheet 1

Step # 3

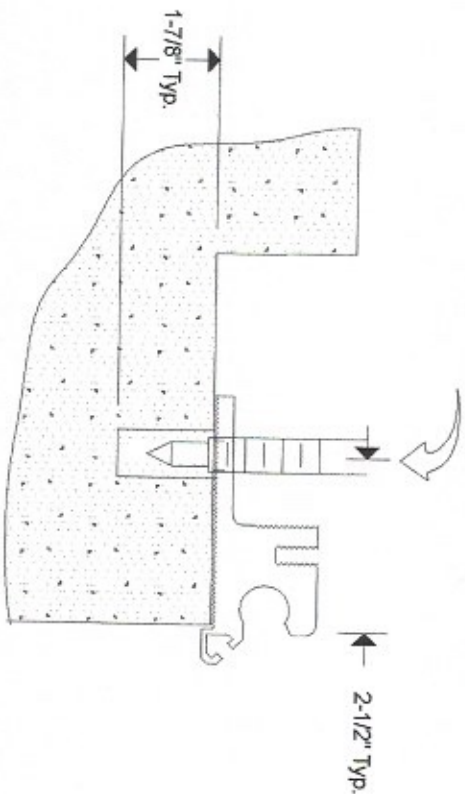


Blockout dimensions for the selected system size should be in conformance with the chart attached.

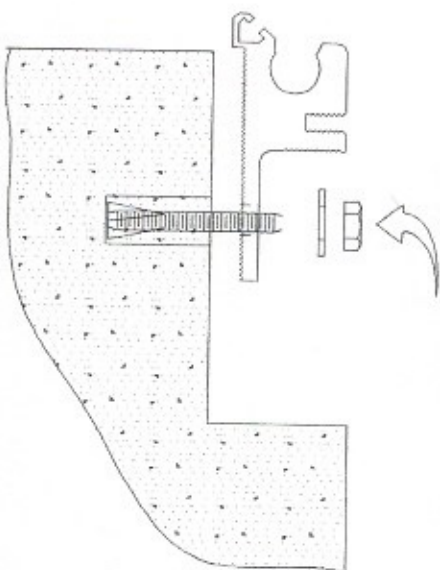
SYSTEM TYPE	JOINT OPENING (X)	BLOCKOUT WIDTH (BW)
X20R	2.00	5.00
X40R	50.800	127.001
X60R	4.00	5.00
X80R	101.600	127.001
X100R	8.00	8.00
X120R	152.401	152.401
X140R	8.00	7.00
X160R	203.201	177.801
X180R	10.00	8.00
X200R	254.001	203.201
X220R	12.00	8.00
X240R	304.801	228.601
X260R	15.00	10.25
X280R	381.002	260.351
X300R	18.00	12.00
X320R	457.202	304.801

Step # 4

Using the Base Extrusion F as the template, locate and drill holes at the punched hole spacing provided. Utilize a 3/8" D. drill bit.



Install the Powers "Power Stud" anchor into the drilled hole. Locate the Base Extrusion F over the anchor and position the washer and nut. Next drive the anchor assembly with a hammer until seated. Torque to 30-32 Ft-Lbs.



NOTE:

1. For specific installation data on the "Power Stud" please contact Powers Fasteners. Their phone number is (914) 235-6300. Or their website is www.powers.com. The "Power Stud" utilized is their catalog No. 7413.
2. As the Base Extrusions are being located and attached, it is important to utilize a straight edge in order adjust for proper elevation. Shims may be required if blockouts are not in proper alignment.

LymTal International, Inc.

Scale: NTS

Drawn By: LAG

Date: 9/1/17

Revised:

Iso-Flex Xtreme Joint Installation

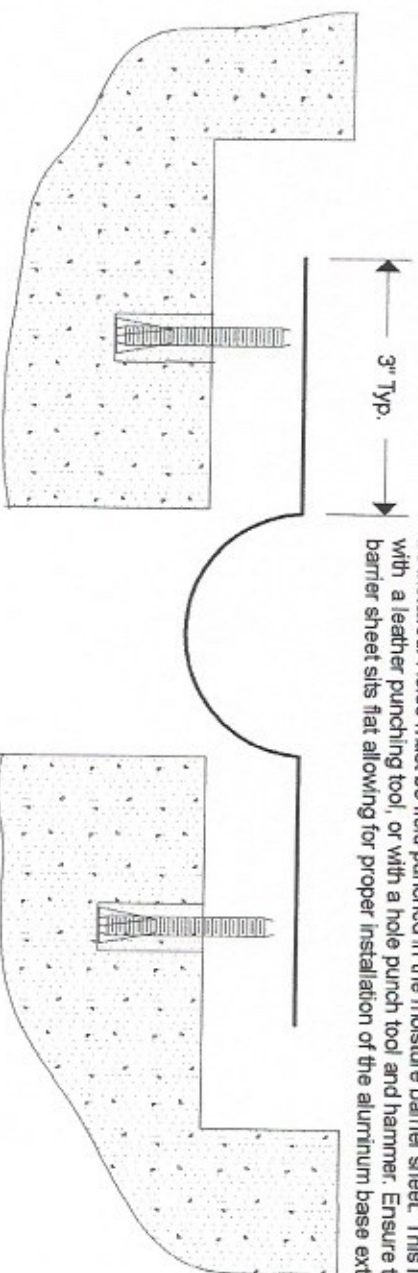
Polywing Design

XR Polywing Installation Sheet 2

Step # 4A

Optional Moisture Barrier Sheet (MBS) Installation

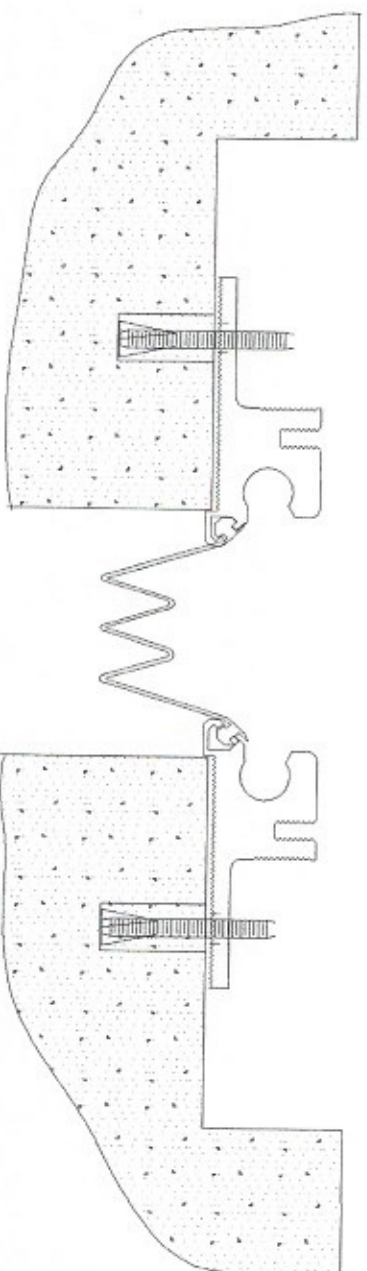
Once the anchors are drilled and installed, the optional Iso-Flex MBS (moisture barrier sheet) can be installed. Holes must be field punched in the moisture barrier sheet. This is best accomplished with a leather punching tool, or with a hole punch tool and hammer. Ensure that the moisture barrier sheet sits flat allowing for proper installation of the aluminum base extrusion.



Step # 4B

Optional Moisture Barrier Extrusion (MBE) Installation

The interlocking Iso-Flex MBS (moisture barrier extrusion) can also be installed. When selecting the MBE series moisture barrier, be sure to size according to the Xtreme joint system installed. The MBE series barrier installs easily using a small roller or screen installing tool.



LymTal International, Inc.

Scale: NTS

Drawn By: LAG

Date: 9/1/17

Revised:

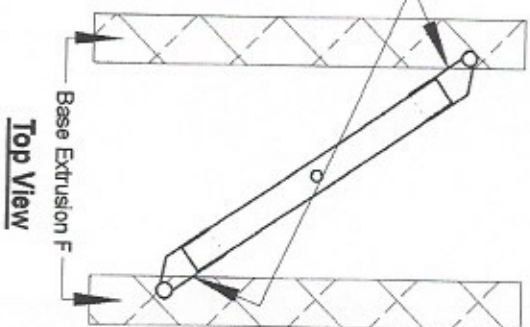
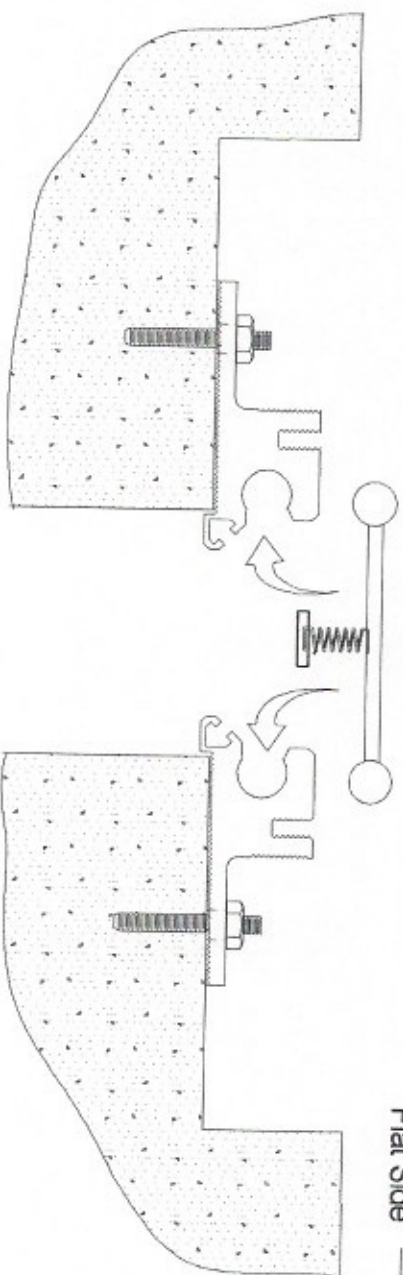
Iso-Flex Xtreme Joint Installation

Polywing Design

XR Polywing Installation Sheet 2a

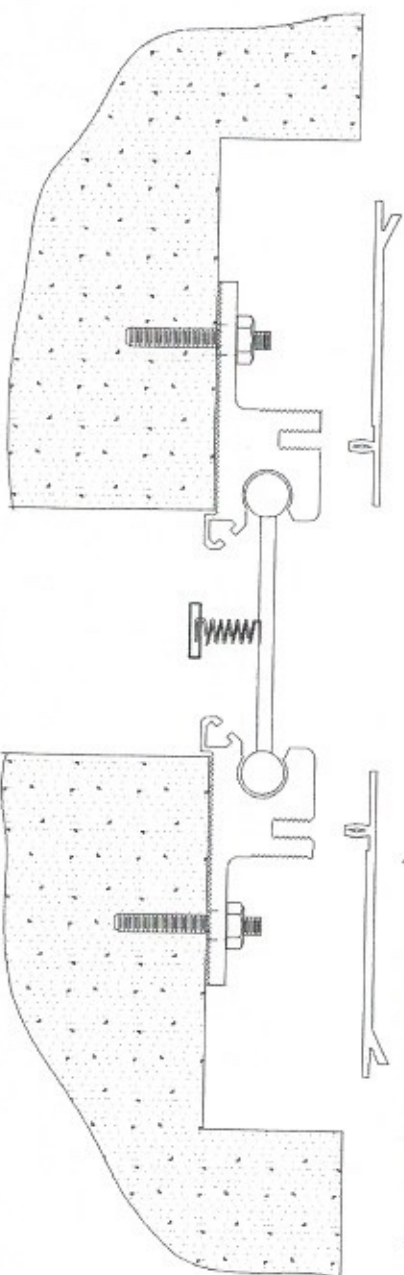
Step #5

Following the installation of each 10 Ft. pairing of Base Extrusion F, insert seven (7) of the Pivot Guide Bar assemblies. The Pivot Guide Bar assemblies should slide in from the end of the Base Extrusion. Be sure to install the Guide Bars in the last length of Base Extrusion before tightening anchors. **NOTE: THE PIVOT GUIDE BARS MUST ALL BE ORIENTED IN THE SAME DIRECTION AND MUST BE ALIGNED AS SHOWN ON THE ADJACENT SKETCH. (FLAT SIDE OF END CASTING TOWARD BASE EXTRUSION F)**



Top View

Step #6



Align 5 Ft. lengths of Polywing Plates over the base extrusions. Using the flared anchor post in the Polywing, press the Polywing plate into the "race" of the aluminum base extrusion. Use even hand pressure or a light mallet to tap the Polywing firmly into place.

LymTal International, Inc.

Scale: NTS

Drawn By: LAG

Date: 9/1/17

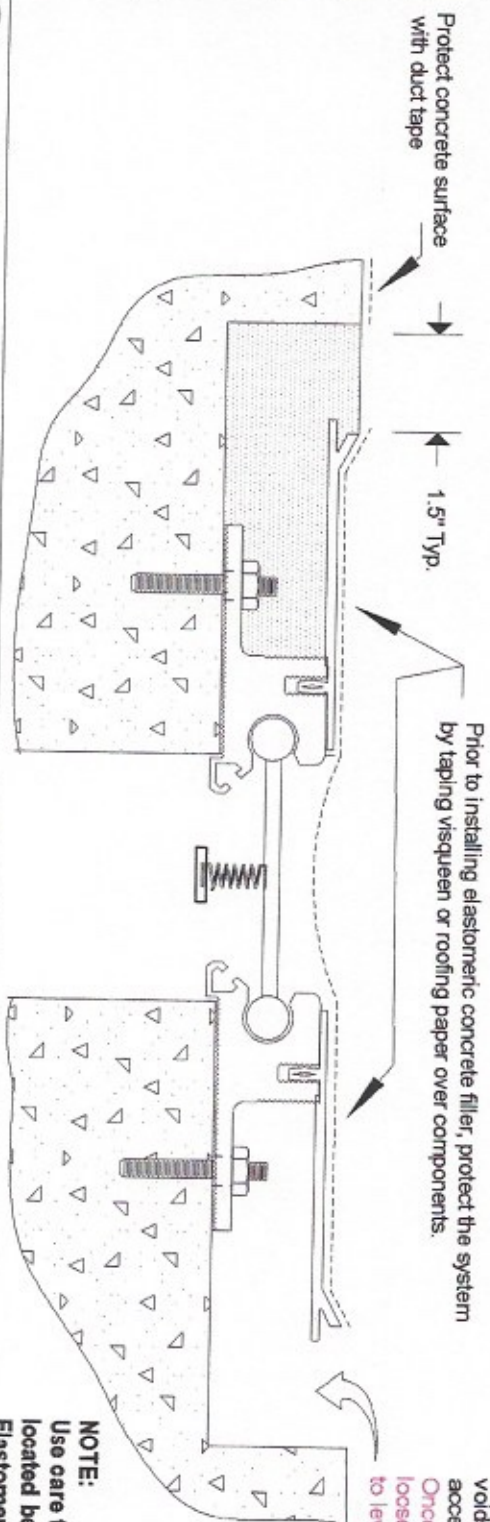
Revised:

Iso-Flex Xtreme Joint Installation

Polywing Design

XR Polywing Installation Sheet 3

Step #7

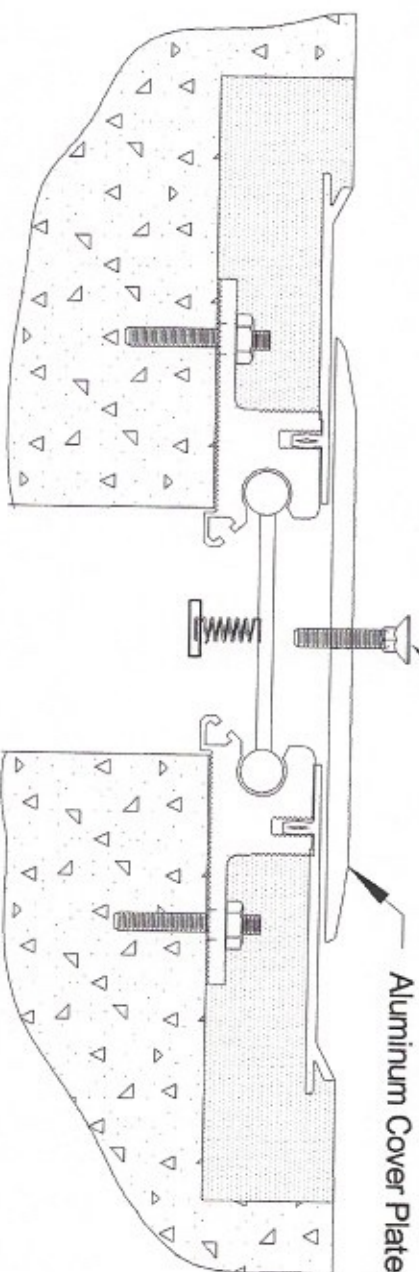


Install Iso-Flex 900 Elastomeric Concrete, compacting with a margin trowel to eliminate voids. Flex Polywing upward to provide better access to pack Elastomeric Concrete below. Once the Elasto. Conc. is in place set the loose cover plates on top of the joint system to level the polywing for solid bearing.

NOTE:
Use care to protect vehicles and other property located below the work area when placing Elastomeric Concrete.

Step #8

Align aluminum cover plate and install stainless steel screw until tensioned. Do not tighten completely causing the spring to have no resilience.



LymTal International, Inc.

Scale: NTS

Drawn By: LAG

Date: 9/1/17

Revised:

Iso-Flex Xtreme Joint Installation

Polywing Design

XR Polywing Installation Sheet 4