

# *Iso-Flex* Winged Expansion Joint Installation Sequence



1. Prepare dry & sound blockout.



2. Install joint profile with wings flush.



3. Mask off and protect work area.



4. Mix two Primer #10 components.



5. Brush apply primer to concrete interfaces.



6. Ensure that primer is under profile wings.



7. Combine tack coat liquid components.



8. Mix components for 1 minute.



9. Gun tack coat material under wing.



10. Combine 900 header liquids.



11. Add & mix in aggregate material.



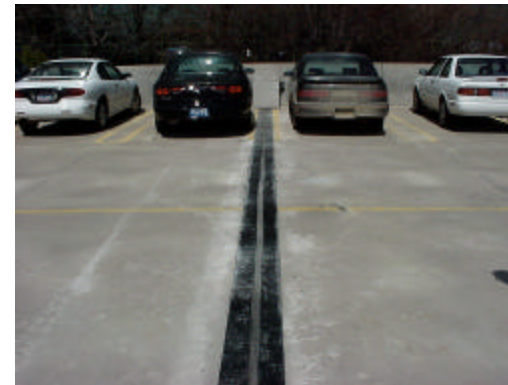
12. Pour 900 header into blockout.



13. Trowel header to a smooth finish.



14. Completed installation.



15. Joint system in service.