

Iso-Flex® Dura-Block Expansion Joint System

PRODUCT DESCRIPTION

The Iso-Flex Dura-Block expansion joint system consists of a mechanically anchored, steel reinforced anchor block with various sizes of preformed thermo-rubber seal profiles.

BASIC USES

Iso-Flex Dura-Block expansion joint is a rugged system that is appropriate for use in roadway, parking deck and other vehicular applications where heavy vehicle traffic is expected.

ADVANTAGES

- The system is capable of accommodating heavy vehicular traffic.
- The flush surface profile allows for usage in pedestrian areas.
- Having a complete rubber traffic surface creates a very quiet installation, particularly in hard-wheeled applications such as with tow motors.
- Durable, excellent weathering EPDM rubber.

LIMITATIONS

- Performance of the Iso-Flex Dura-Block expansion joint is closely tied to preparation and installation techniques as well as structural behavior of the expansion joint gap. Maintaining close tolerances is essential to the success of the expansion joint system. Correct installation of this system is critical and should be performed only by an authorized applicator of products manufactured by LymTal International, Inc.

STANDARD COLORS

Black

INSTALLATION

Preliminary: Blockouts to receive the Iso-Flex Dura-Block expansion joints must be clean, dry, sound, relatively smooth and free of voids, ridges, and sharp projections. Joint openings and blockouts must be properly sized.

Installation:

Utilize a chalk line to reference the location of the bedding sealant on each side of blockout. Apply Sure Plug bedding sealant to the blockout base. Install the "D" Series profile into the joint gap and press into the bedding material. Locate the anchor blocks over the profile. Insert and torque down anchor bolts. Mix 910 Tack Coat and install into bolt holes and edge void areas.

Reference Dura-Block Installation Procedures for complete installation instructions.

PRECAUTIONS

Refer to Material Safety Data Sheet for detailed health and safety information prior to use.

WARRANTY

LymTal warrants that its products are manufactured free of defects and conform to the technical data listed. Under this warranty we will replace, at no charge, any material proven defective when applied in accordance with our written instructions for applications recommended by us as suitable for subject product. LymTal shall not be liable for any injury, loss or damage, direct or consequential, arising out of the use of the product.

TECHNICAL DATA FROM LAB TESTS

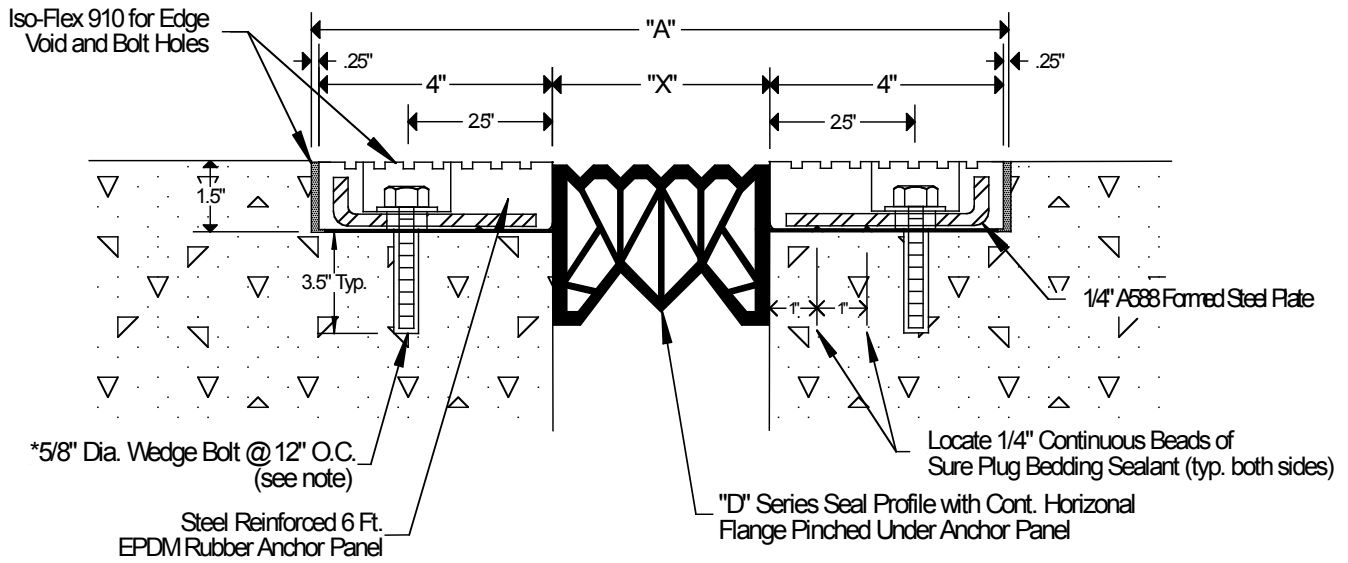
"D" Series Thermo-Rubber Profile

Property	Test Method	Test Results
Hardness (Shore A)	ASTM D2240	65± 5
Tensile Strength	ASTM D412	815 psi
Elongation @ Break	ASTM D412	430% min

TECHNICAL DATA FROM LAB TESTS

EPDM Elastomeic Anchor Panel

Property	Test Method	Test Results
Hardness (Shore A)	ASTM D2240	60± 5
Tensile Strength	ASTM D412	1500 psi
Elongation @ Break	ASTM D412	350% min
Compression Set	ASTM-395	50% max



Iso-Flex Dura-Block Expansion Joint System

System Type	"Normal" Width "A"	Blockout Depth	Joint Opening "X"			Total Movement
			Normal	Min.	Max.	
D23	10.00"	1.50"	1.50"	.844"	2.156"	1.312"
D40	11.00"	1.50"	2.50"	1.25"	3.75"	2.50"
D60	12.25"	1.50"	3.75"	1.75"	5.75"	4.00"

Revised 1/11

LymTal International, Inc.

4150 South Lapeer Road • Lake Orion, MI 48359 • Tel (248) 373-8100 • Fax (248) 373-3480 • www.lymtal.com