

## **Iso-Flex® Xtreme**

### Seismic Expansion Joint System

#### **PRODUCT DESCRIPTION**

The Iso-Flex Xtreme expansion joint system is a pivot guided, metallic cover plate system that has been designed to handle large or seismic type movement. The system design has standard aluminum edge anchor members and can utilize either aluminum or stainless steel cover plate materials.

#### **BASIC USES**

Iso-Flex Xtreme expansion joint is a heavy-duty system that is appropriate for use in stadium, parking deck and other vehicular applications where large movement is expected.

#### **ADVANTAGES**

- The system is capable of accommodating heavy vehicular traffic.
- The flush surface profile allows for usage in pedestrian areas.
- The pivot guided cover plate design is capable of very large movements as found in seismic code areas.
- The system design is adaptable for surface mounting of the cover plate.
- Excellent weatherability.

#### **LIMITATIONS**

- Performance of the Iso-Flex Xtreme expansion joint is closely tied to preparation and installation techniques as well as structural behavior of the expansion joint gap. Maintaining close tolerances is essential to the success of the expansion joint system. Correct installation of this system is critical and should be performed only by an authorized applicator of products manufactured by LymTal International, Inc.

#### **STANDARD COLORS**

Mill Finish Aluminum

#### **INSTALLATION**

**Preliminary:** Blockouts to receive the Iso-Flex Xtreme expansion joints must be clean, dry, sound, very smooth, flat and free of voids, ridges, and sharp projections. Joint openings and blockouts must be properly sized.

**Preparation:** Prepare the substrate by sandblasting. Next, using a standard aluminum edge anchor as a template locate and drill the anchor locations. Once the anchor holes are drilled insert the anchor bolts and blow the blockout clean.

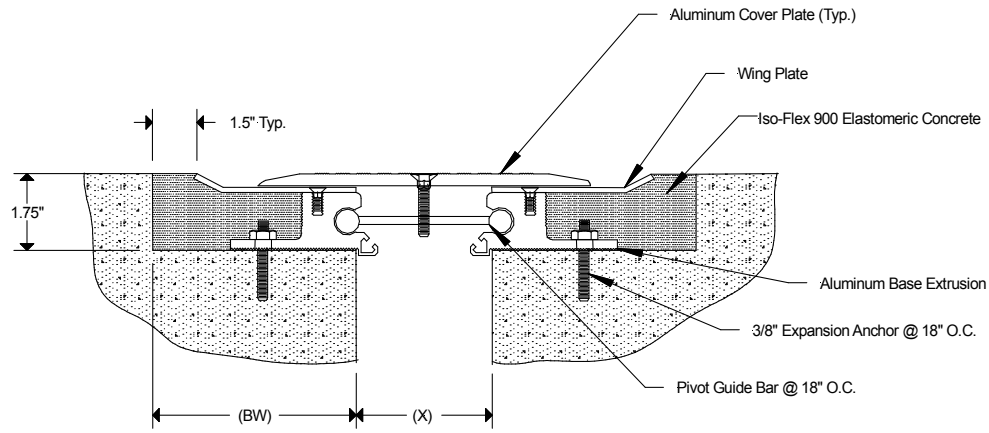
**Installation:** With the substrate prepared pull a chalk line to locate base member attachment. Using the base member as a template, drill holes, locate anchors and install the aluminum base members into place. Next, on the recessed type of system, attach the wing plates to the base member. Mix and install Iso-Flex 900 Elastomeric Concrete into the blockout void area. Follow by sliding in the pivot bars along the base member. With the pivot bars roughly aligned, the cover plate can be located over the system and the alignment bolts can be installed.

#### **PRECAUTIONS**

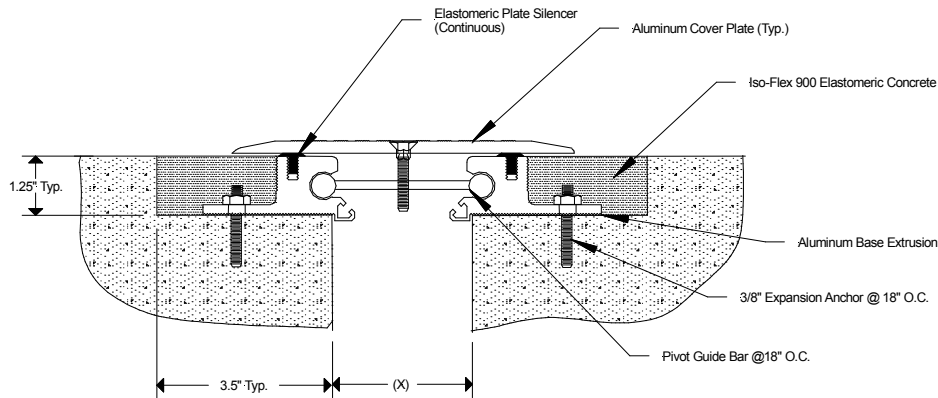
Refer to Material Safety Data Sheet for detailed health and safety information prior to use.

#### **WARRANTY**

LymTal warrants that its products are manufactured free of defects and conform to the technical data listed. Under this warranty we will replace, at no charge, any material proven defective when applied in accordance with our written instructions for applications recommended by us as suitable for subject product. LymTal shall not be liable for any injury, loss or damage, direct or consequential, arising out of the use of the product.



**Xtreme Recessed**



**Xtreme Surface**

Iso-Flex Xtreme "Recessed" Joint System					
SYSTEM TYPE	JOINT OPENING (X)	BLOCKOUT WIDTH (BW)	JOINT OPENING		TOTAL MOVEMENT
			MIN.	MAX.	
X20R	2.00 50.800	5.00 127.001	1.50 38.100	3.00 76.200	1.50 38.100
X40R	4.00 101.600	5.00 127.001	1.50 38.100	6.00 152.401	4.50 114.300
X60R	6.00 152.401	6.00 152.401	1.50 38.100	9.00 228.601	7.50 190.501
X80R	8.00 203.201	7.00 177.801	1.50 38.100	12.00 304.801	10.50 266.701
X100R	10.00 254.001	8.00 203.201	1.50 38.100	15.00 381.002	13.50 342.901
X120R	12.00 304.801	9.00 228.601	1.50 38.100	18.00 457.202	16.50 419.102
X150R	15.00 381.002	10.25 260.351	1.50 38.100	22.50 571.502	21.00 533.402
X180R	18.00 457.202	12.00 304.801	1.50 38.100	27.00 685.803	25.50 647.703

Iso-Flex Xtreme "Surface" Joint System				
SYSTEM TYPE	JOINT OPENING (X)	JOINT OPENING		TOTAL MOVEMENT
		MIN.	MAX.	
X20S	2.00 50.800	1.50 38.100	3.00 76.200	1.50 38.100
X40S	4.00 101.600	1.50 38.100	6.00 152.401	4.50 114.300
X60S	6.00 152.401	1.50 38.100	9.00 228.601	7.50 190.501
X80S	8.00 203.201	1.50 38.100	12.00 304.801	10.50 266.701
X100S	10.00 254.001	1.50 38.100	15.00 381.002	13.50 342.901
X120S	12.00 304.801	1.50 38.100	18.00 457.202	16.50 419.102
X150S	15.00 381.002	1.50 38.100	22.50 571.502	21.00 533.402
X180S	18.00 457.202	1.50 38.100	27.00 685.803	25.50 647.703

NOTE:

1. All extruded aluminum members shall be 6063-T6 alloy.
2. All blockout fill shall be Iso-Flex 900 elastomeric concrete.
3. System anchorage shall be 3/8" diameter @ 18" O.C.
4. Pivot Guide Bars shall be located @ 18"

Revised 12/08

**LymTal International, Inc.**

4150 South Lapeer Road • Lake Orion, MI 48359 • Tel (248) 373-8100 • Fax (248) 373-3480 • www.lymtal.com